

# PSE 100 E

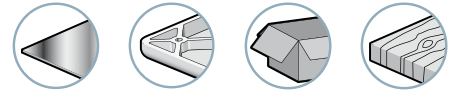
## Electric Vacuum Switch



The PSE 100 E series vacuum switch with electric output allows the vacuum level in the system to be checked by means of a patented system.

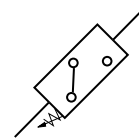
- It is adapted to all electrical automated systems.
- The choice between the NO or NC function is made during wiring.

Industry-specific applications



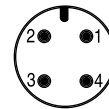
### Specifications

<b>Models</b>	<b>Two versions: PSE 100 E and PSE 100 EC</b>
<b>Compatible fluids</b>	All non-corrosive gases
<b>Switching power</b>	250 V - 5 A with cable 125 V - 3 A with M12 connector
<b>Electrical connection</b>	M12 female connector or 3 wire PVC cable, length 2 m
<b>Adjustment range</b>	-300 mb to -850 mb
<b>Precision</b>	3%
<b>Hysteresis</b>	125 mb
<b>Repetitivity</b>	< 3% of the whole range
<b>Maximum speed</b>	30 cycles per minute
<b>Permissible overpressure</b>	2 bar (destructive at 5 bar)
<b>Mechanical endurance</b>	5 x 10 <sup>6</sup> operations
<b>Materials</b>	Body: Polyacetal - Vacuum sensor: nitrile membrane
<b>Protection</b>	IP 54 with hollow shaft connected - IP 40 without this fitting
<b>Weight</b>	PSE 100 E: 165 g and PSE 100 EC: 37 g
<b>Temperature</b>	14 °F to 176 °F



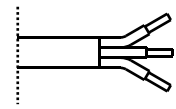
### Electrical Connection

#### M12 connector



- 1 : Common
- 2 : NO Contact
- 3 : -
- 4 : NC Contact

#### PVC cable (length 2m)

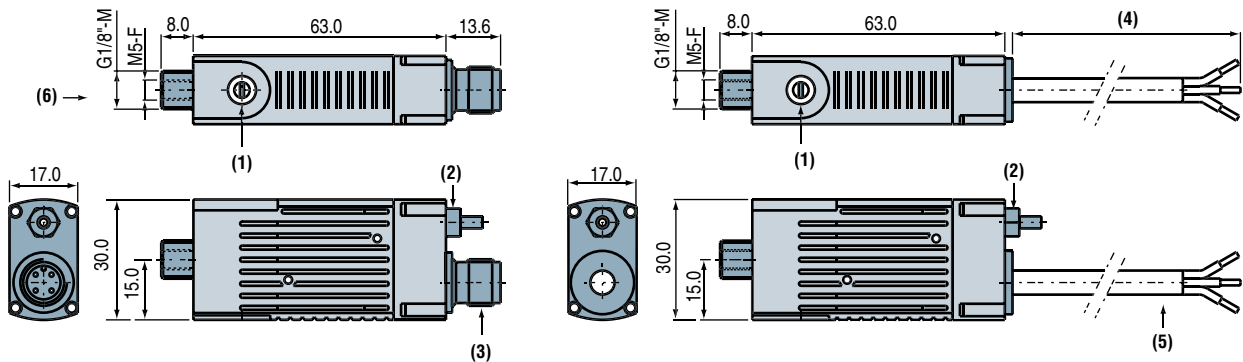


- Brown: Common
- White: NO Contact
- Black: NC Contact

#### Connection for EC version (M12)

Straight PVC cable, 2 meters: Part No CD M12.  
Elbow PVC cable, 2 meters: Part No CC M12.  
See page 10/11.

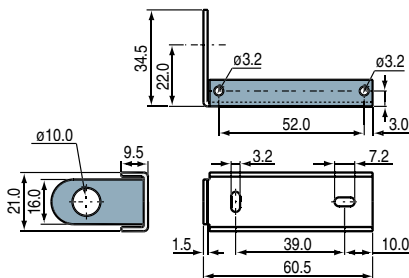
### Dimensions



- (1) Adjustment screw
- (2) Atmospheric pressure hollow shaft fitting for tube, inside Ø 2.7mm
- (3) M12 male connector
- (4) Approx. 2 meters
- (5) Cable, 3 conductors
- (6) Vacuum

### Additional Information

Vacuum switch attachment - Clip Part No: PSE.F



Note: all dimensions shown in (mm)

For all orders, please specify:  
**Model + Version.**  
Example: PSE100EC

1: Model	2: Version
PSE 100 E	- PVC cable, length 2m
C	M12 connector