

# FVL 12

## In-line Filter



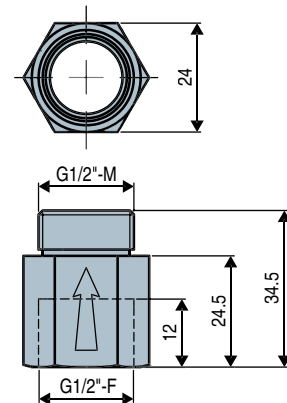
The FVL12 in-line filter allows quick integration for vacuum pumps GVP and GEMP.

### Specifications

<b>Material</b>	Body: Nickel-plated brass Grille: 400 micron stainless steel
<b>Weight</b>	50 g

Mounting on option

The FVL 12 series in-line filter can also be mounted as a GVO P option on GVP series vacuum pumps. See page 7/8.



Note: all dimensions are shown in (mm)

 For all orders, please specify: FVL12

# FVL 68

## In-line Vacuum Filter



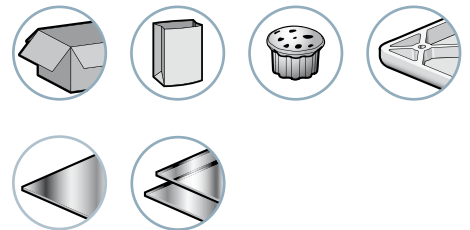
The FVL68 in-line filter ensures quick integration into a vacuum network, thanks to its push fitting for 6 x 8 calibre pipes.

Ideal for protecting a vacuum generator from normal clogging. The FVL is equipped with a 400 micron filtering grille.

### Applications

The FVL68 in-line filter is ideal for protecting LEM mini vacuum pumps. Installation directly onto the vacuum outlet of the pump, using a 6 x 8 push fitting.

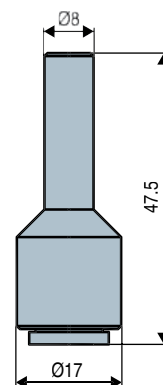
Industry-specific applications



### Specifications

<b>Material</b>	Body: POM Grille: 400 micron stainless steel Push fitting Brass – Steel and polymer
<b>Weight</b>	7 g.

Dimensions



Example usage



Note: all dimensions are shown in (mm)

 Specify part n°: FVL68