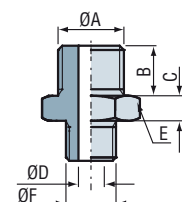
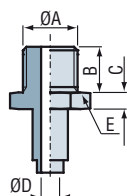
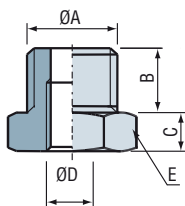
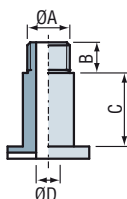


* inserto per VSP 14



Raccordi a resca

	ØA (mm)	B (mm)	C (mm)	ØD (mm)	E (mm)
IM 3 VPG 1	M3	3	2	0.4	5
IM 3 VPG 1.5	M3	3	2	0.7	5
IM 5 VPG 2	M5	4.5	3.5	1	7
IM 5 VPG 5	M5	4.5	3.5	2.2	7
IM 11 A ⁽¹⁾	1/8G	7.5	6	3.5	14
IM 11 A SP 139*	1/8G	7.5	6	3.5	14
IMC 14	1/4G	10	8	7	17
IM 14 VSP 3856	1/4G	14.6	3	9	Ø 24
IM 18 VPG 5	1/8G	8	5	2.2	14
IM 18 VPG 15	1/8G	8	5	2.2	14
IM 18 VPG 20	1/8G	8	5	3	14
IM 18 VPG 25	1/8G	8	5	4	14
IM 18 VPG 50	1/8G	8	5	4	14
IM 20	M3	3	2	1.4	5
IM 21 ⁽²⁾	M5	4.5	5	2.5	7
IM 21 SP 139*	M5	4.5	5	2.5	7
IM 22 ⁽²⁾	M6	5	5	3.5	7
IM 23	10-32	4.5	5	2.5	7
IM 24	M5	4.5	2.5	2.5	10

Viti scanalate

	ØA (mm)	B (mm)	C (mm)	ØD (mm)
IM 5 M 15	M5	5	2	2.5
IM 5 M 20	M5	5	4	2.5
IM 6 M 25	M6	6	6	3.5
IM 6 M 50	M6	6	6	3.5
IM 50	M5	5	11	2.8
IM 60 ^{(2) (3)}	M6	7	11	3.5
IM 68	M8	8	11	5.2
IM 80	1/8G	8	18	6
IM 85	M10x150	8	18	6

Adattatori per viti scanalate

	ØA (mm)	B (mm)	C (mm)	ØD (mm)	E (mm)
IM 10 M 6 F ⁽¹⁾	M10	7	3.5	M6	13
IM 12 F 18	1/2G	14	6	1/8 G	22
IM 14 M 6 F ⁽¹⁾	1/4G	8	5	M6	17
IM 14 F 18	1/4G	8	5	1/8 G	17
IM 18 M 5 F	1/8G	6	4.5	M5	13
IM 18 M 6 F ⁽¹⁾	1/8G	6	4.5	M6	13
IM 38 F 18	3/8G	9	5	1/8 G	19

Rivettati (in fabbrica)

	ØA (mm)	B (mm)	C (mm)	ØD (mm)	ØE (mm)
IM 41	1/4G	11	4	4.4	17
IM 51	1/4G	11	6	8	21
IM 52	3/8G	11	6	8	21

Avvitato

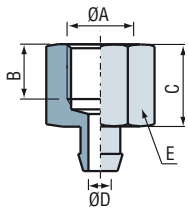
	ØA (mm)	B (mm)	C (mm)	ØD (mm)	E (mm)	ØF (mm)
IM 14 M 10 M	1/4G	10	5	5	17	M10x125

(1) Disponibile in versione NPT.

(2) Possibilità di inserire un ugello di diametro calibrato per ridurre le perdite in caso di utilizzo sistema a più ventose.

(3) Disponibile in acciaio inossidabile

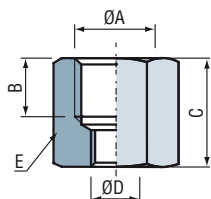
N.B.: alle pagine 5/7 e 5/8 sono disponibili versioni di inserti con foro calibrato.



* inserto per VSP 14

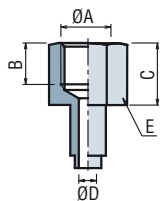
Raccordo a resca

	ØA	B	C	ØD	E
IF 5 VPG 5	M5	6	9	2.2	14
IF 10 A ⁽¹⁾	1/8G	8	12	3.5	14
IF 10 A SP 139*	1/8G	8	12	3.5	14
IFC 14	1/4G	12	15	6.9	8
IF 18 VPG 5	1/8G	9	15	2.2	14
IF 18 VPG 15	1/8G	9	15	2.5	14
IF 18 VPG 20	1/8G	9	15	3	14
IF 18 VPG 25	1/8G	9	15	4	14
IF 18 VPG 50	1/8G	9	15	4	14



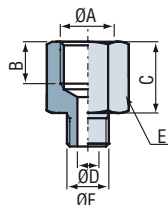
Adattatori per viti scanalate

	ØA (mm)	B (mm)	C (mm)	ØD (mm)	E (mm)
IF 14 M 6 F ⁽¹⁾	1/4G	11	16	M6	17
IF 14 F 18	1/4G	9	19	1/8G	17
IF 18 M 5 F	1/8G	7.5	13	M5	13
IF 18 M 6 F ⁽¹⁾	1/8G	7.5	13	M6	13



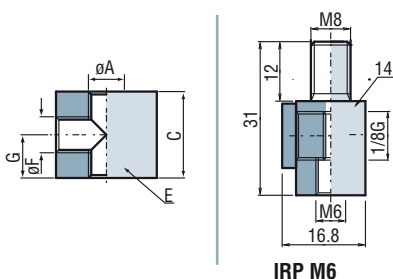
Rivettati (in fabbrica)

	ØA (mm)	B (mm)	C (mm)	ØD (mm)	E (mm)
IF 40	1/4G	10	15	4.4	17
IF 50	1/4G	10	15	8	21



Avvitato

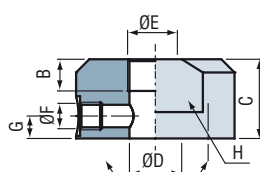
	ØA (mm)	B (mm)	C (mm)	ØD (mm)	E (mm)	ØF (mm)
IF 14 M 10 M	1/4G	10	17	5	17	M10x125



IRP M6

Con uscita radiale

	ØA (mm)	B (mm)	C (mm)	ØD (mm)	E (mm)	ØF (mm)	G (mm)
IR M5	M5	-	12	-	14X8	M5	6
IRP M6	Vedere schema						



4 viti M8 a 90° su d=40
(viti incluse)

Per ventose VPG da 120 a 200 e VSAG 110 e 150

	ØA	B	C	ØD	E	ØF	G	H
IF 12.120	1/2G	24	30	Ø19	Ø60	1/8G	8.7	48
IFS 12 120	1/2G	13	13	-	Ø65	-	-	-

(1) Disponibile in versione NPT.